

From
Grassroots Rugby

to
Governing Body

IRELAND

SportLoMo software is used by a number of Rugby bodies in Ireland and abroad. Users include Ireland Rugby (IRFU) Leinster, Munster, Ulster and Connacht Rugby. The platform is also used by the Rugby Associations in the USA, Portugal and Canada.

This document outlines how SportLoMo is used in Rugby.

COMPETITION AND FIXTURE MANAGEMENT

Provincial administrators create the competitions for every domestic rugby fixture from Underage to Adult level on the SportLoMo platform. The Rugby admin can create new clubs and teams, switch on or off the bonus point system, manually or auto create the fixtures, hide or display fixtures (games) from public view, run data reports on games and results.





STAGE 2

REFEREE SELECTION COMMITTEE

Once these fixtures are created, the referee selection committee appoint their referees at selection meetings for up to one month in advance. Referee selectors can see a list of available and unavailable referees for a given timeline, they can see the previous games the referee has administered, and the system flags them with a warning if:

01

A referee has declared himself unavailable for that date.

02

If they are already selected to referee on that date or that weekend.


03

A referee is a member of one of the clubs in the game.

04

Meets the required referee 'grade' for the selected game.

Once the committee have selected their referees they then notify these referees from the system by SMS and by email (fully automated). The referee is then expected to log in to his SportLoMo account and either accept or reject the fixture he has been nominated for. Accepted fixtures turn green in the system and rejected fixtures turn red – at this juncture only rejected fixtures need concern the administration (must select alternative referees).

A large, light green stylized letter 'S' serves as the background for the entire page. It is composed of two main curved sections, one at the top and one at the bottom, with a central white space. The letter is positioned on the right side of the page, with its left edge extending towards the center.

At a pre-determined time, fixture lists are auto-generated from the system and sent out in multiple formats to the clubs and the press. For example the Press like a condensed version of these fixtures sometimes with no venue, no referee and an abbreviated competition title due to space constraints, whereas the clubs would receive a much more formatted, spaced, easy to read format with all the necessary details including referee, venue and match comments.

FIXTURE NOTIFICATIONS TO CLUBS AND PRESS

STAGE

STAGE 4

ELECTRONIC TEAM SHEETS

Every club in Ireland has access to a SportLoMo account. When a fixture is confirmed the club log into their account and drag and drop their players into a preformatted pitch layout. It's a very visual piece of software and is easy to use, once these players are selected they can choose to either display it immediately to the governing body or hide it until the deadline has elapsed and it appears automatically. They can also print out a team sheet in the exact format required by the national governing body at the click of a mouse.



This team sheet system has helped to prevent clubs playing unregistered players, through running system searches and reports it has eliminated a massive paper trail and has made finding the information they need easy.

Most importantly, it has proven to be very popular with clubs as they have access to their player records and can see how many games and what position a player has played in. It also provides a level of visibility with the governing body as both rugby administration and clubs are reading the same information.

SMS COLLECTION OF RESULTS FROM REFEREES

At the start time of the match, the selected referee will receive an SMS from the system, after the game he is asked to respond back with the score and try count inserted into the message. (Each game has a unique ID). This result will be automatically updated on the system and website and also recalculate the league table in real time. In practice if there are 10 x U-16 matches at 11am on a Saturday morning, by 1pm the results and adjusted table will be available on the website for viewing – this has led to massive amounts of web traffic from Smartphone users on weekends instead of the traditional Monday morning when the administrators are all back in the office updating their website manually.

STAGES

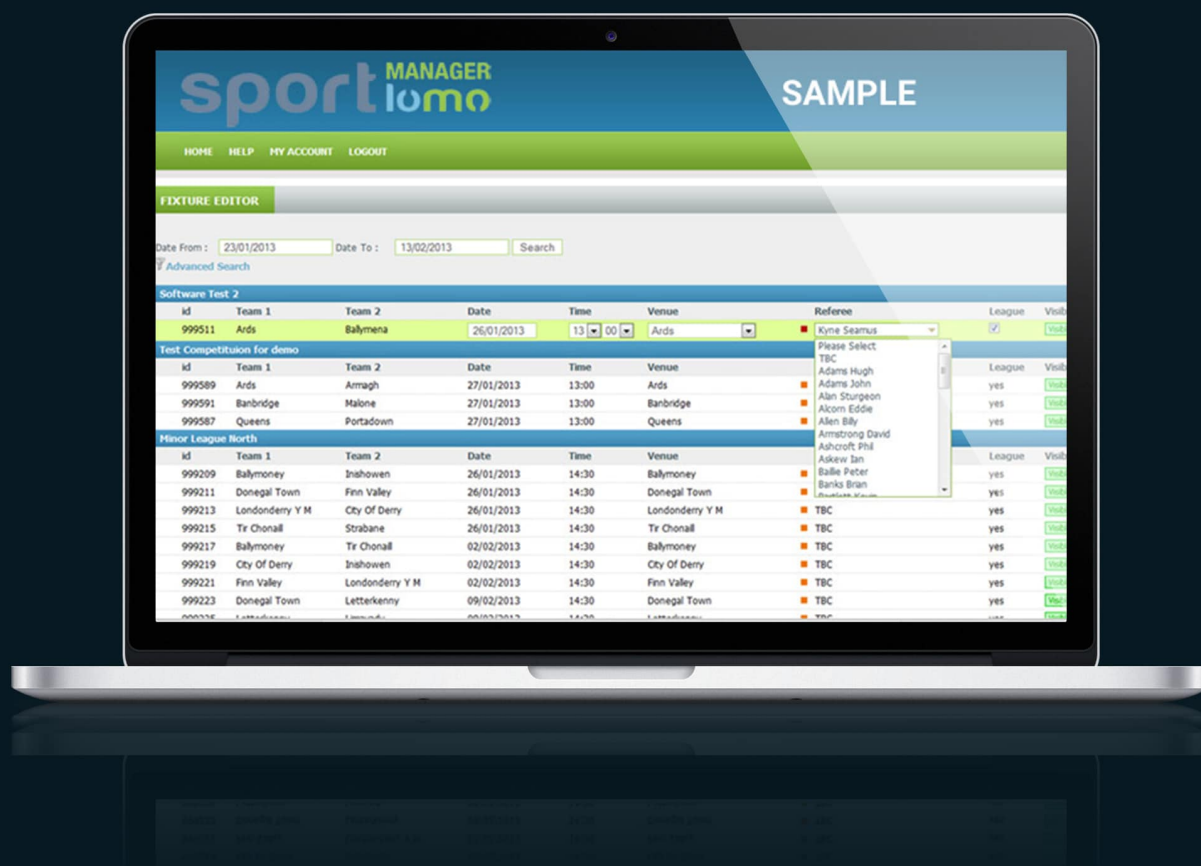


STAGE 6

RESULTS NOTIFICATION TO THE PRESS AND PUBLIC

As with the fixtures notifications in stage 3, many Sport bodies are under huge pressure to have their results and updated tables to the press by a Saturday and Sunday evening. If a results service is reliable, sent in the correct format and delivered on time many newspapers will provide space in their papers for it however if even one of these points fail they will quickly stop making provision for it. At a pre-determined time the SportLoMo system will collate the requested results and tables and send it automatically to associated media and fans. Newspaper 'page ready' results and fixtures are a feature of Sportlomo.

Twitter: Sportlomo also feeds results and Online team announcements LIVE to twitter accounts.




STAGE 7

ADVANCED RESULTS INPUT AND DISCIPLINE REPORT

After the quick SMS result response, referees are later required to log into their system, update the result further with dropped goals, conversions and penalty details. They also input their match and discipline reports. The benefit for the referee here is that the players are already inputted from the electronic team sheets submitted by the clubs so they only have to click on each player and select the infraction from the drop down list. A concussion entry module will be available later in 2016.





The SportLoMo system has proved hugely beneficial to associations to run accurate reports on their actual 'playing' database rather than their overall membership database. Because the SportLoMo electronic team sheets are updated on a weekly basis it has proven far more accurate than the far larger membership database which does not give accurate participation levels.

Reports can also be run on the number of games and competitions which are run across every age grade level and gender.

They can view clubs and players activity report and ensure a fair distribution of fixtures/games throughout the year and isolate why if they are not.

SportLoMo Users: Irish Rugby Football Union (IRFU) and the four Irish Rugby Provinces - Leinster Rugby, Munster Rugby, Connacht Rugby and Ulster Rugby. And some USA, Portugal and Canadian Rugby Associations and Governing Bodies.

RUNNING REPORTS

SOME RUGBY USERS OF SPORTLOMO SOFTWARE



Rugby Portugal



Ireland Rugby



Rugby Canada



Rugby Ontario



Munster Rugby



Leinster Rugby



Ulster Rugby



Connacht Rugby



New England Rugby (US)



Empire Rugby (NY)



British Columbia
Rugby



Nova Scotia Rugby
Canada

SPORTSMANAGER sportlomo